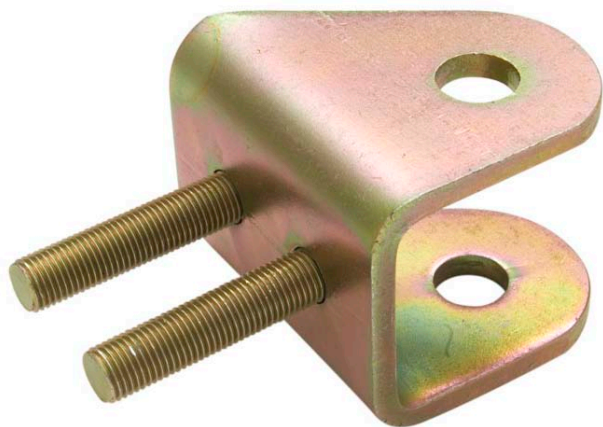


Modified lower wishbone attachment bracket TR4A-6

PS0006



Modified Lower
Wishbone attachment
bracket with 6.6mm
longer studs

ESSENTIAL WHEN A STRENGTHENING KIT IS FITTED OR NEGATIVE CAMBER IS REQUIRED

WHAT DOES IT DO?

Replaces original TR4A part: 139715 and TR250, 5, 6 part: 148961. It has longer studs than the standard part ensuring the nyloc nuts used to hold it in place are in safety (i.e. 1½ threads protruding).

WHAT ARE THE BENEFITS?

The TR4A bracket only had one stud and was prone to breakage. Whilst TR250, 5, 6 had two, they would still pull through the chassis. It is common practice to add a 3mm plate behind the suspension bracket to strengthen it. This leaves insufficient thread protruding on an original bracket for the nyloc nuts to be in safety. This bracket has much longer studs, which will ensure the attachment nuts will be in safety.

WHAT PROBLEMS CAN IT ADDRESS?

Some cars have had brackets come away from the chassis or have bent chassis that will not allow correct geometry to be set. This bracket will overcome the problem. This bracket is also useful should the front suspension require negative camber to be set, this is not possible with standard brackets, as the studs will definitely be too short.

WHY BUY OUR KIT?

Manufactured to a high standard using High Tensile screws there should be little chance of failure. We have been selling and fitting these brackets in our workshop for 10 years with zero problems. Neil Revington uses them on his competition TR5 which has covered thousands of miles racing, rallying, Hillclimbing and sprinting without problem.

WHAT ISSUES ARE THERE IN SELLING THE PRODUCT?

None, the bracket is a direct replacement.

PRODUCTS AVAILABLE

TR4A-6
Modified Lower Wishbone attachment bracket

RTR3287



This bracket has extended studs from 32mm (1.26") to 38.6mm (1.52") ensuring that the nyloc nuts used to hold it in place are in safety (1 ½ threads protruding)

LINKED PARTS

TR4A-6
Adjustable Upper fulcrum

RTR3174K



There will be instances where the bracket will not give enough adjustment particularly if the chassis has been damaged. RTR3174K is an adjustable upper fulcrum kit that can be used in conjunction which may provide sufficient extra adjustment to bring the suspension settings to the desired position.

Prices can be found on our website
www.revingtontr.com

Buy this part online as well as a huge range of other standard and improved parts at www.revingtontr.com

You can browse and order from the complete range of TR parts together with the Revington TR range of performance enhancing components at

www.revingtontr.com

For more information contact:

Revington TR Ltd Thorngrove Barns Middlezoy Somerset TA7 0PD UK

Telephone 01823 698437 Fax 01823 698109

International Telephone +44 1823 698437

International Fax +44 1823 698109

Email info@revingtontr.com

